
Electric blower heater Owner's manual



AMERICOOOL

1 Table of contents

Items to check before use	03
Name of parts (WFHE-10/20/30)	07
Caution for installation	08
Troubleshooting	09
Control Guide	10
Hotsen Electric blower heater Diagram	11
Components(WFHE-10)	16
Components(WFHE-20)	18
Components(WFHE-30)	20
Product specification	22

2 Items to check before use

 **Safety Cautions**

These are important for the user's safety and prevention of property damage and/or loss. Please read carefully to ensure the safe and efficient operation of this product.

 **Safety tips**

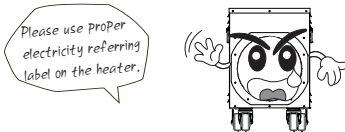
- Never operate a heater when you suspect damage. Before use, inspect the heater, cord, and plug for damage. Follow all operation and maintenance instructions.
- Never leave the heater operating unattended.
- Be sure the heater plug fits tightly into the wall outlet. If not, do not use the outlet to power the heater.
- During use, check frequently to determine if the heater plug or cord, wall outlet, or faceplate is HOT! If the plug, outlet, or faceplate is hot, discontinue use of the heater, and have a qualified electrician check and / or replace the plug or faulty wall outlet(s). If the cord is hot, disconnect the heater, and have it inspected/repared by an authorized repair person.
- Never run the heater's cord under rugs or carpeting. This can damage the cord, causing it and nearby objects to burn.

2 Items to check before use

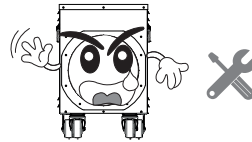
⚠ Safety Cautions

These are important for the user's safety and prevention of property damage and/or loss. Please read carefully to ensure the safe and efficient operation of this product.

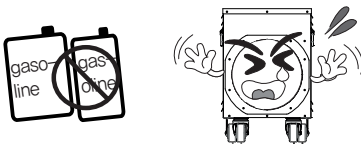
- Please use proper electricity referring to label on the heater.
(There is a risk of product damage and fire)



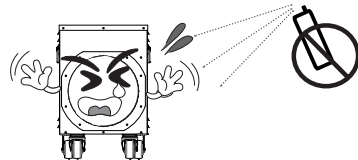
- Use the cable that meets the specification
(Refer to wiring diagram page)



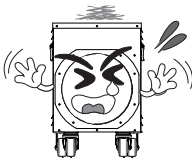
- Do not keep or use Inflammables and Combustible spray near product.
(There is a risk of product damage and fire)



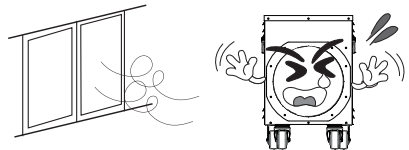
- Do not spray water directly on the product or wipe it with benzene, thinner or alcohol.
(There is a risk of electric shock, fire or damage to the product)



- Do not bend the wire excessively and put heavy objects on this heater.
(There is a risk of product damage and fire)



- Do not install the product near flammable materials such as curtains, blankets, clothes, etc
(Overheating of the product may cause a fire)

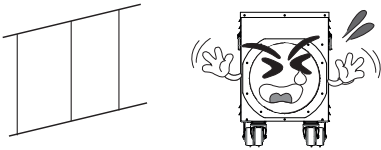


2 Items to check before use

⚠ Cautions

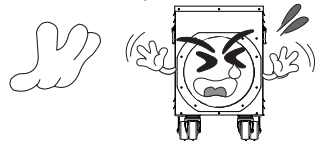
These are important for the user's safety and prevention of property damage and/or loss. Please read carefully to ensure the safe and efficient operation of this product.

- Do not block heater outlet



- Do not touch the heat generating part when in use.

(There is a risk of burns)



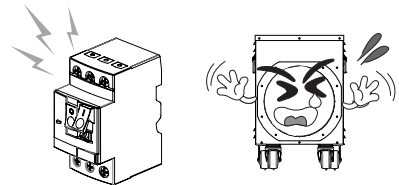
- Be careful of foreign objects getting into air inlet and outlet

(It may cause malfunction)



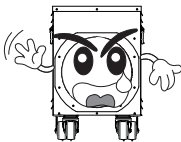
- Use a proper breaker in line with electric capacity

(There is a risk of electric shock or fire)



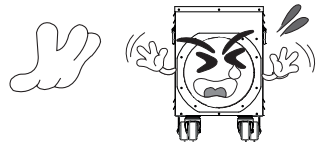
- Avoid high temperature and high humidity when storing for long term and store in a dry place

(It may cause rust or malfunction)



- Do not touch this heater right after the use

(There is a risk of burns as the surface of this heater is remained hot)

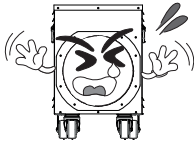


2 Items to check before use

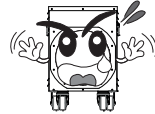
⚠ Cautions

These are important for the user's safety and prevention of property damage and/or loss. Please read carefully to ensure the safe and efficient operation of this product.

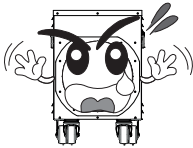
- Never move this heater when it is under operation
(If the product falls down, it may cause fire)



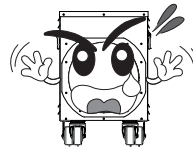
- If there is noise, smell or smoke coming from the heater, immediately unplug the power cord and contact the service center.
(There is a danger of electric shock or fire)



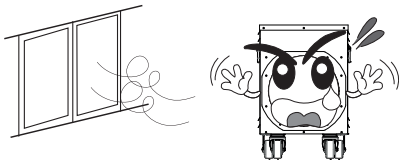
- Do not look at heat exhaust
(The product can be operated at any time because of temperature sensor)



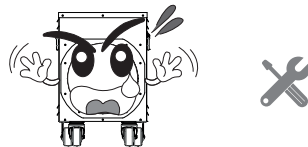
- Do not expose this heater to direct sunlight, rain, strong wind.
(There is a danger of electric shock or fire)



- Open the window once or twice every hour for ventilation.
(It may cause lack of oxygen if the product is operated for a long time without ventilation)

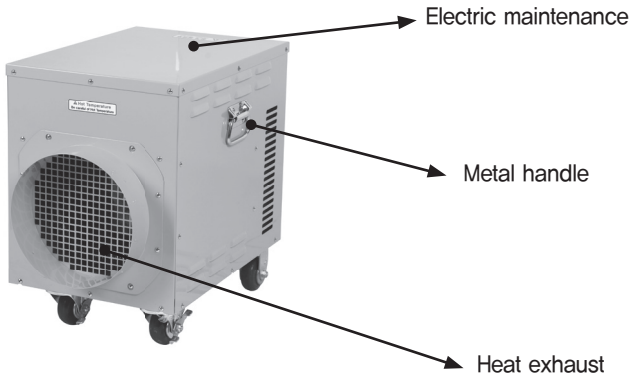


- Do not disassemble, repair or modify this heater when in use.
(It causes a high risk of accident, fire or electric shock.)

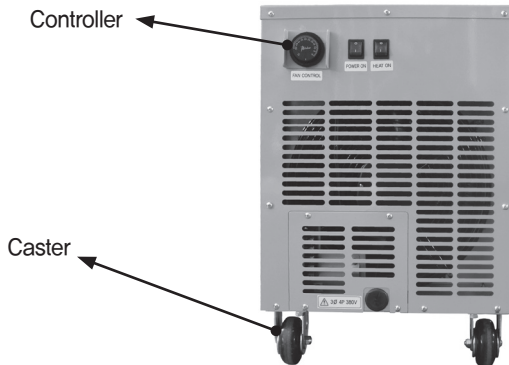


3 Name of parts (WFHE-10/20/30)

Front



Back



4 Caution for installation

[Right place for installation]

- ! Caution** Do not use in an explosive environment or where there is a possibility of leakage of flammable gas.
- ! Caution** Use in a shaded area
- ! Caution** Do not put any foreign substances around Heat exhaust
- ! Caution** When the product is used outdoor area, protect it from rain or snow and lock the castors before use.
- ! Caution** Store the product with cover. Use the heater only after completely cleaning dust or dirt on the bottom.

[Keep safe clearance]

It is critical to keep safe clearance around the heater and not block the flow of air.

- **We recommend at least 90cm(3 feet) in front of heater, and 30cm(1 feet) to the sides and above.**
- Keep all furniture, papers, and other flammable objects away from the heater.
- Make sure there is constant air flow around the heater.

[Automatic overheat prevention sensor]

Unit is built with internally built sensor that automatically shuts off the heater when it reaches abnormal temperature.

[Easy Maintenance]

1. Disconnect the power to the heater.
2. Blow debris down through the top element using a blow-dryer or vacuum on blow cycle.
3. Vacuum the dirt and dust in the heater and turn the power back on.

5 Troubleshooting

Problem	Solution
When Power Switch lamp is not working	<ul style="list-style-type: none"> – Check the main power connection (→ check main terminal) – check if the heater is tilted – temperature sensor detects heater overheating during operation (→ check whether fan is working) – if fan is not working, check for shorted wire
when heater switch lamp is not working	<ul style="list-style-type: none"> – check for shorted wires(→ restart after inspection)
When heater is not working	<ul style="list-style-type: none"> – check for shorted wires(→ restart after inspection) – OCR(over current relay) is on due to overload (→ restart after pressing reset button)

- After identifying and fixing the problem, always turn the power off and on again to re-operate

6 Control Guide



POWER ON

ON/OFF switch for main power At OFF, both fan and heater will be turned off. If protective sensors(overheat sensor, tilt motion sensor) detects hazards, Heater will get shut off automatically. After identifying and solving the problem, re-start the heater



Temperature Control

The heater will turn off when the temperature reaches set temperature.



HEAT ON

ON/OFF switch for the heater.

CAUTION

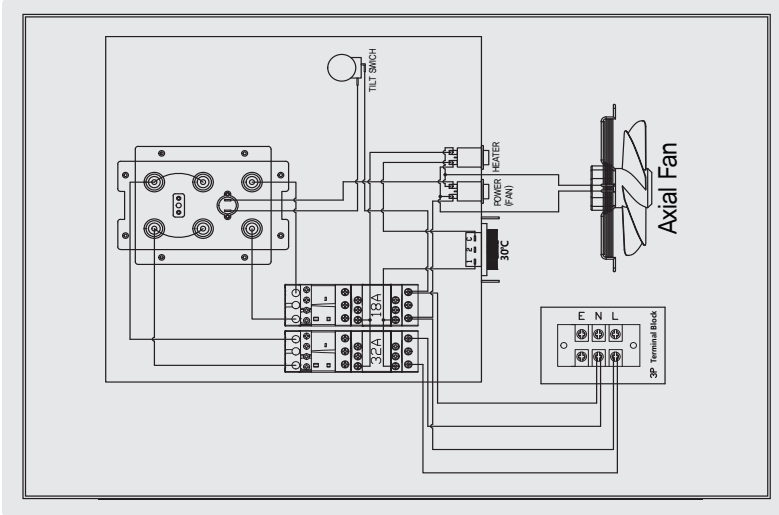
Shut-off Instruction

: You must follow these instructions to turn off the machine to PREVENT FIRE HAZARDS

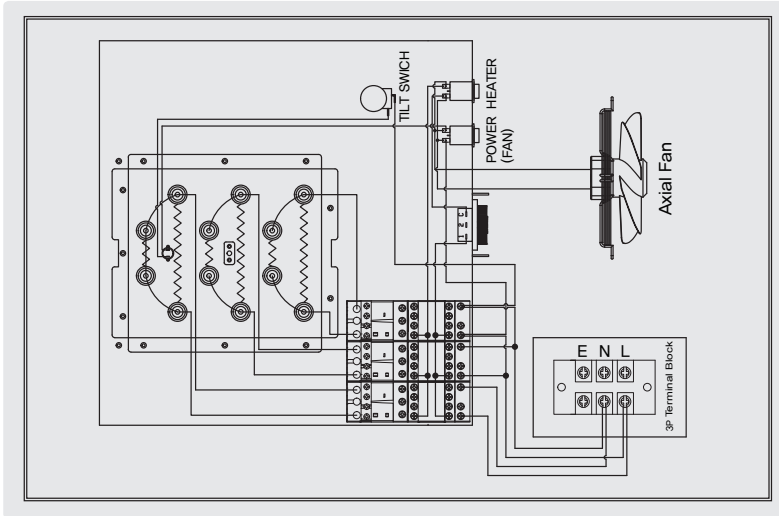
1. Turn off green switch(Heater)
2. Wait for 3-4 minutes for unit to cool down
3. Turn off red switch (Power and fan)

7 Hotsen Electric blower heater Diagram

WFHE-10 (240V)

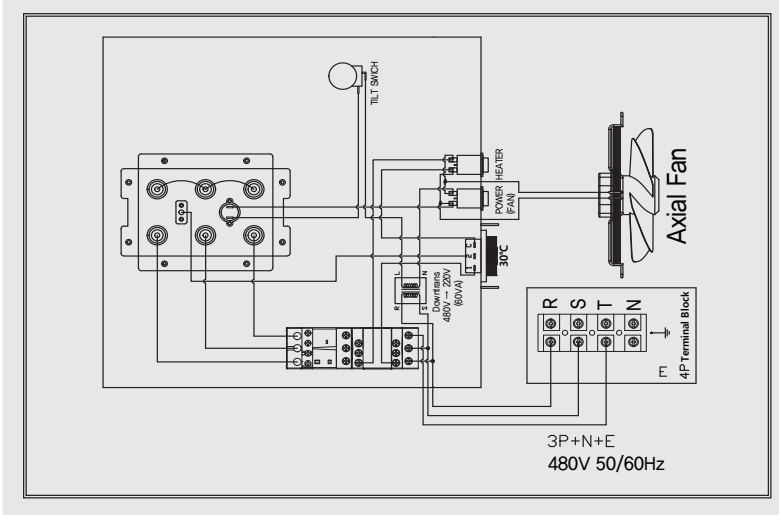


WFHE-20 (240V)

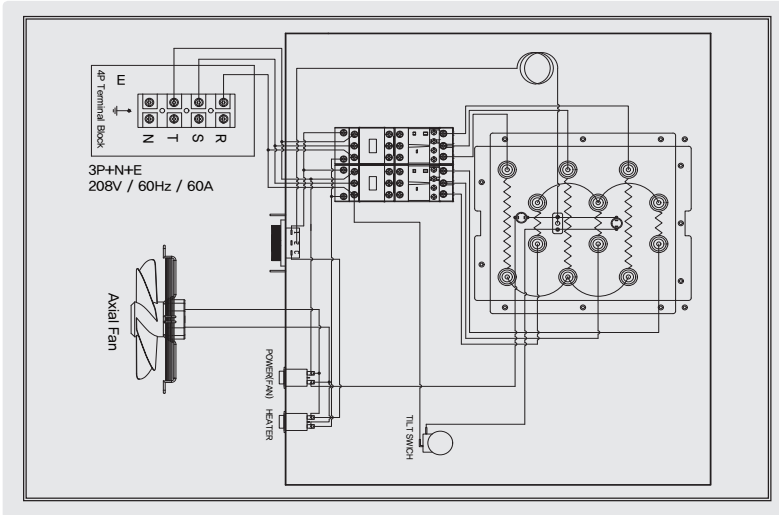


7 Hotsen Electric blower heater Diagram

WFHE-10 (3Phase 3Wire 480V)

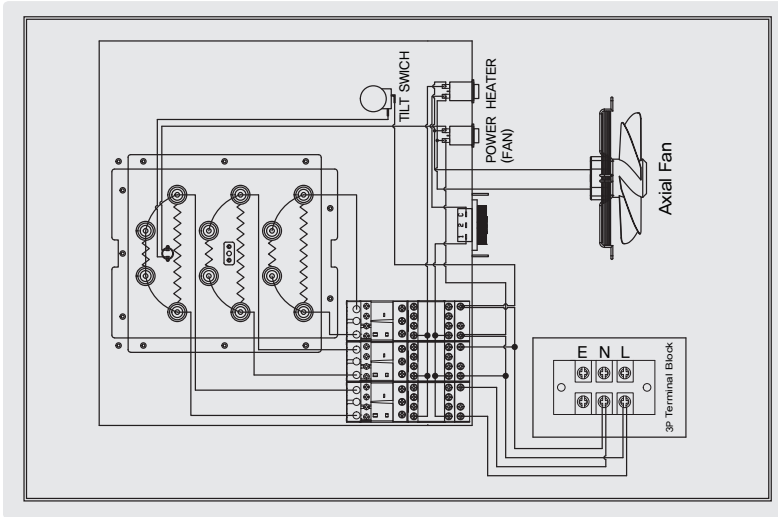


WFHE-15 (3Phase 3Wire 208V)

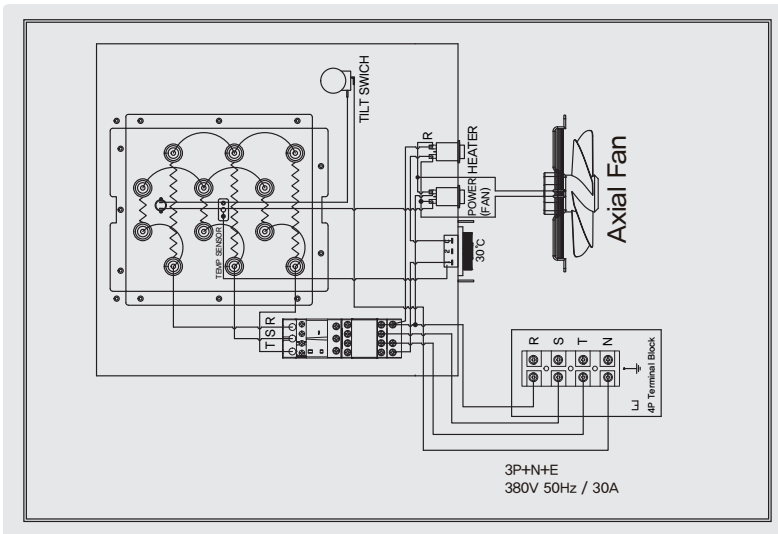


7 Hotzen Electric blower heater Diagram

WFHE-20 (240V)

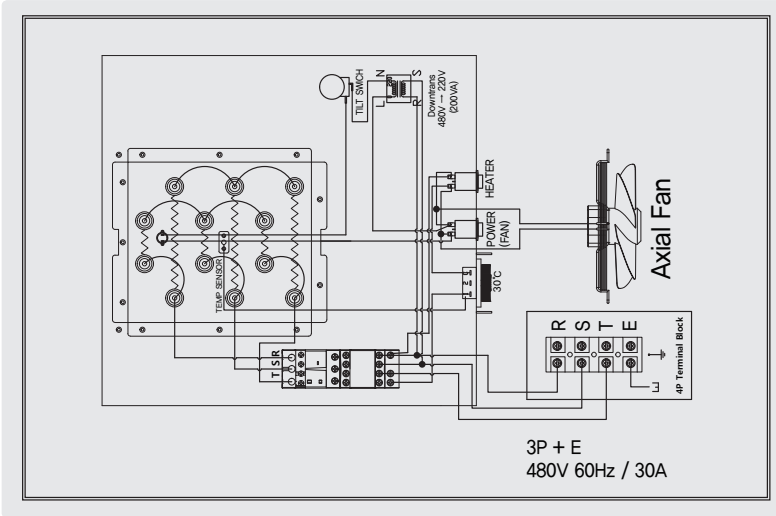


WFHE-20 (3Phase 4Wire 380V)



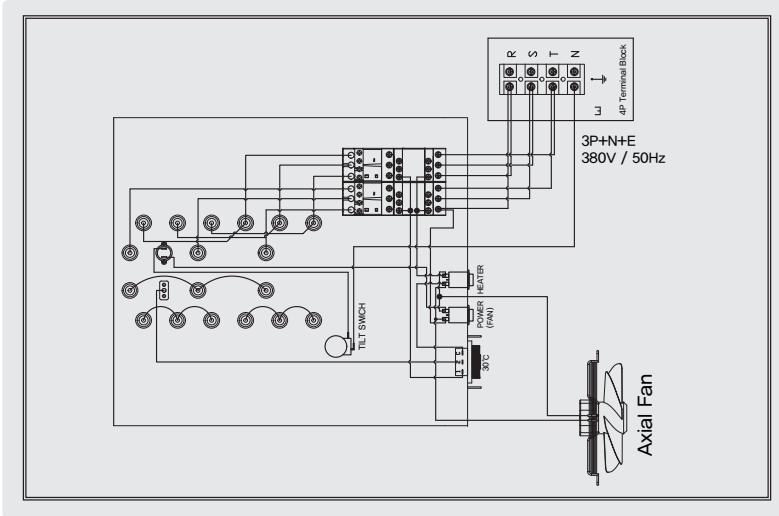
7 Hotsen Electric blower heater Diagram

WFHE-20 (3Phase 4Wire 480V)

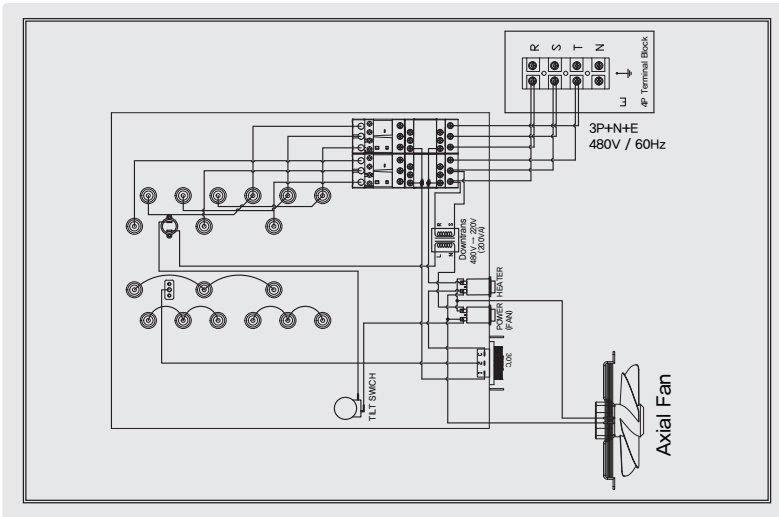


7 Hotsen Electric blower heater Diagram

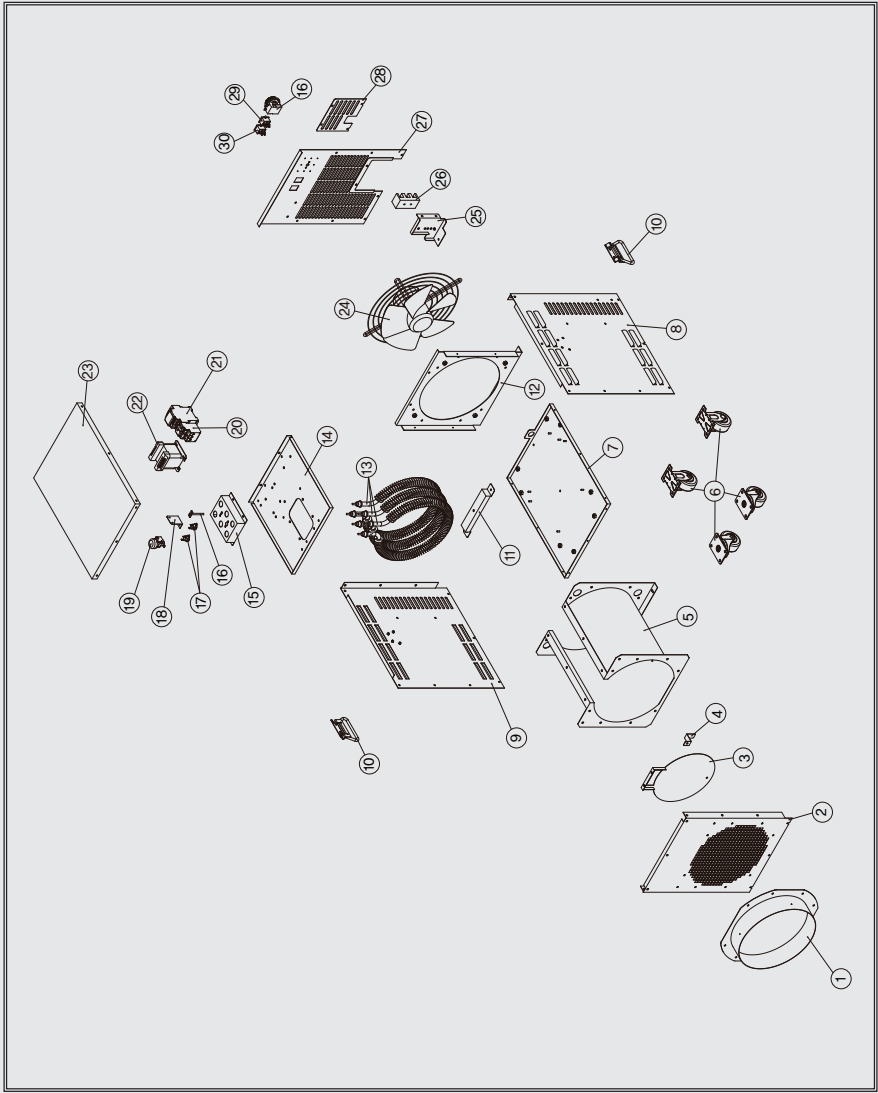
WFHE-30 (3Phase 4Wire 380V)



WFHE-30 (3Phase 3Wire 480V)



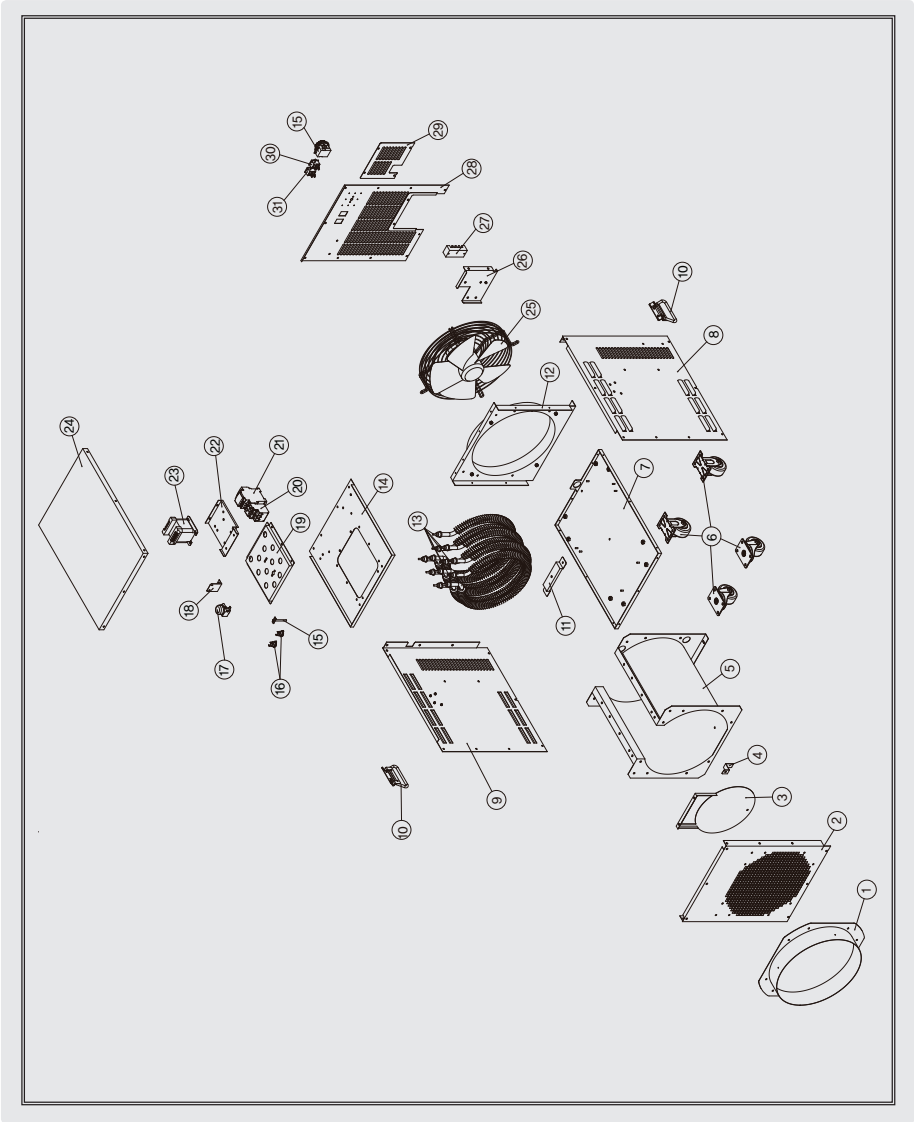
8 Components (WFHE-10)



8 Components (WFHE-10)

1	FRONT AIR GUIDE	WFHE-10K-0001	17	OVERHEAT SENSOR	WFHE-102030-09
2	FRONT COVER	WFHE-10K-0002	18	TLIT SENSOR BTK	WFHE-10K-0015
3	AIR GUIDE	WFHE-10K-0008	19	TLIT SENSOR	WHE-050K/100K-04(16년형)
4	AIR GUIDE BKT	WFHE-10K-0009	20	OCR	WFHE-10K-06(B)
5	FAN AIR GUIDE	WFHE-10K-0010			WFHE-10K-07(B)
6	CASTER	WFHE-102030-05(A)	21	MAGNETIC CONTACTOR	WFHE-10K-06(A)
		WFHE-102030-05(B)			WFHE-10K-07(A)
7	BOTTOM BASE	WFHE-10K-0011	22	TRANSFORMER (480V only)	WFHE-102030-02(WT/200VA)
8	LF COVER	WFHE-10K-0003	23	TOP COVER	WFHE-10K-0005
9	RH COVER	WFHE-10K-0004	24	FAN	WFHE010-05
10	HANDLE	WFHE102030-00 (공용)	25	TERMINAL BLOCK BKT	WFHE-10K-0016
11	FAN AIR GUIDE BTK	WFHE-10K-0011	26	TERMINAL BLOCK	WFHE-10K-09(A)
12	BARRIER	WFHE-10K-0012	27	BACK COVER	WFHE-10K-0006
13	HEATER	WFHE-10K-02 (240V)A형	28	BACK COVER BKT	WFHE-10K-0007
14	FAN AIR GUIDE TOP	WFHE-10K-0013	29	MAIN ON/OFF TOGGLE SWITCH	WFHE-102030-10
15	FAN AIR HEATER BKT	WFHE-10K-0014	30	HEATER ON/OFF TOGGLE SWITCH	WFHE-102030-11
16	FAN ON/OFF THERMOSTAT SENSOR	WFHE-102030-08			

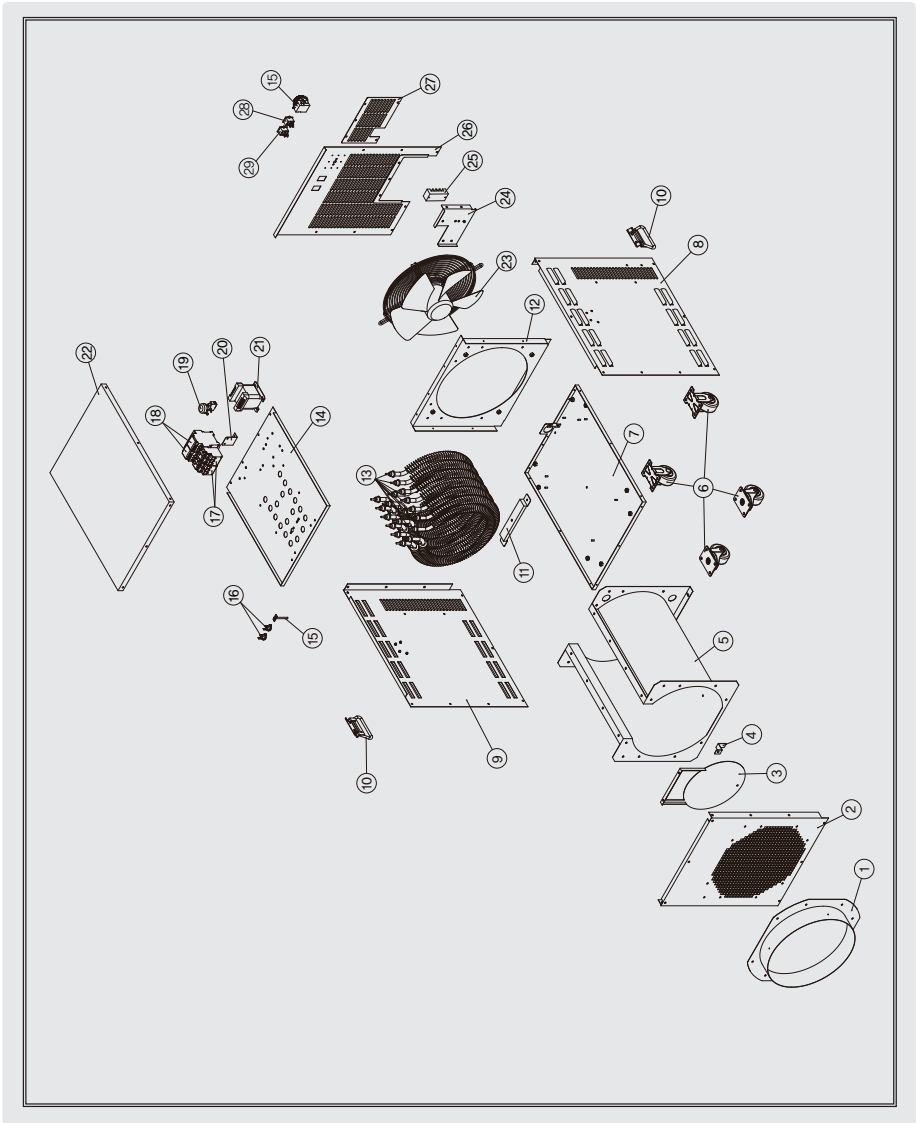
8 Components (WFHE-20)



8 Components (WFHE-20)

1	FRONT AIR GUIDE	WFHE-10K-0001	15	FAN ON/OFF THERMOSTAT SENSOR	WFHE-102030-08
2	FRONT COVER	WFHE-10K-0002	16	OVERHEAT SENSOR	WFHE-102030-09
3	AIR GUIDE	WFHE-10K-0008	17	TLIT SENSOR	WHE-050K/100K-04 (16년형)
4	AIR GUIDE BKT	WFHE-10K-0009	18	TLIT SENSOR BTK	WFHE-10K-0015
5	FAN AIR GUIDE	WFHE-10K-0010	19	FAN AIR HEATER BKT	
6	CASTER	WFHE-102030-05(A)	20	OCR	WFHE-20K-06(B)
		WFHE-102030-05(B)	21	MAGNETIC CONTACTOR	WFHE-20K-06(A)
7	BOTTOM BASE	WFHE-10K-0011	22	TRANSFORMER BKT (480V only)	
8	LF COVER	WFHE-10K-0003	23	TRANSFORMER (480V only)	WFHE-102030-02 (WT/200VA)
9	RH COVER	WFHE-10K-0004	24	TOP COVER	WFHE-10K-0005
10	HANDLE	WFHE102030-00(공용)	25	FAN	WFHE020-05
11	FAN AIR GUIDE BTK	WFHE-10K-0011	26	TERMINAL BLOCK BKT	WFHE-10K-0016
12	BARRIER	WFHE-10K-0012	27	TERMINAL BLOCK	WFHE-20K-09
13	HEATER	WFHE-20K-02(240V) A형			
		WFHE-20K-02(240V) B형	28	BACK COVER	WFHE-10K-0006
		WFHE-20K-02(480V) A형	29	BACK COVER BKT	WFHE-10K-0007
		WFHE-20K-02(480V) B형	30	MAIN ON/OFF TOGGLE SWITCH	WFHE-102030-10
14	FAN AIR GUIDE TOP	WFHE-10K-0013	31	HEATER ON/OFF TOGGLE SWITCH	WFHE-102030-11

8 Components (WFHE-30)



8 Components (WFHE-30)

1	FRONT AIR GUIDE	WFHE-10K-0001	16	OVERHEAT SENSOR	WFHE-102030-09
2	FRONT COVER	WFHE-10K-0002	17	OCR	WFHE-30K-06(B)
3	AIR GUIDE	WFHE-10K-0008			WFHE-30K-07(B)
4	AIR GUIDE BKT	WFHE-10K-0009	18	MAGNETIC CONTACTOR	WFHE-30K-06(A)
5	FAN AIR GUIDE	WFHE-10K-0010			WFHE-30K-07(A)
6	CASTER	WFHE-102030-05(A)	19	TLIT SENSOR	WHE-050K/100K-04 (16년형)
		WFHE-102030-05(B)	20	TLIT SENSOR BTK	WFHE-10K-0015
7	BOTTOM BASE	WFHE-10K-0011	21	TRANSFORMER (480V only)	WFHE-102030-02 (WT/200VA)
8	LF COVER	WFHE-10K-0003	22	TOP COVER	WFHE-10K-0005
9	RH COVER	WFHE-10K-0004	23	FAN	WFHE030-05
10	HANDLE	WFHE102030-00(공용)	24	TERMINAL BLOCK BKT	WFHE-10K-0016
11	FAN AIR GUIDE BTK	WFHE-10K-0011	25	TERMINAL BLOCK	WFHE-30K-09(B)
12	BARRIER	WFHE-10K-0012	26	BACK COVER	WFHE-10K-0006
13	HEATER	WFHE-30K-02(480V)A형	27	BACK COVER BKT	WFHE-10K-0007
		WFHE-30K-02(480V)C형	28	MAIN ON/OFF TOGGLE SWITCH	WFHE-102030-10
14	FAN AIR GUIDE TOP	WFHE-10K-0013	29	HEATER ON/OFF TOGGLE SWITCH	WFHE-102030-11
15	FAN ON/OFF THERMOSTAT SENSOR	WFHE-102030-08			

8 Product specification

Model	WFHE-10		
Power Suply	1phase 2wire 240V	3phase 4wire 380V	3phase 3wire 480V
Hertz	50/60Hz	50/60Hz	50/60Hz
Heating Value	33,700BTU		
Motor Air Flow	CMH 1,370 / CFM 806		
Power Consumption	10,275W / 10,285W		
Current Consumption	42,81A/42,85A	15,61A/15,62A	12,35A/12,37A
Size(WDH)mm	392,5 x 571 x 564		
Weight	26,9 kg	28,5 kg	30,6 kg

Model	WFHE-15		
Power Suply	3phase 4wire 208V		
Hertz	60Hz		
Heating Value	51,000BTU		
Motor Air Flow	CMH 1,875 / CFM 1103		
Power Consumption	15,130W		
Current Consumption	42A		
Size(WDH)mm	422,5 x 621 x 584		
Weight	39 kg		

8 Product specification

Model	WFHE-20		
Power Suply	1phase 2wire 240V	3phase 4wire 380V	3phase 3wire 480V
Hertz	50/60Hz	50/60Hz	50/60Hz
Heating Value	67,500BTU		
Motor Air Flow	CMH 1,875 / CFM 1103		
Power Consumption	19,900W / 19,930W		
Current Consumption	82.9A/83A	30.23A/30.28A	23.93A/23.97A
Size(WDH)mm	422,5 x 621 x 584		
Weight	36,9 kg	37,2 kg	39,1 kg

Model	WFHE-30	
Power Suply	3phase 4wire 380V	3phase 3wire 480V
Hertz	50/60Hz	50/60Hz
Heating Value	101,350 BTU	
Motor Air Flow	CMH 2,450 / CFM 1,441	
Power Consumption	29,829W / 29,865W	
Current Consumption	45.32A/45.37A	35.87A/35.92A
Size(WDH)mm	472,5 x 671 x 624	
Weight	49,4 kg	51,3 kg

SHIPPING LIST

- (1) Electric Blow Heater
- (1) Owner's Manual

OBTAINING SERVICE

If the Weltem Electric Blow Heater by AmeriCool requires Service:

1. Use the TROUBLESHOOTING section in this manual to eliminate obvious causes.
2. Verify there are no circuit breakers tripped.
3. Call your dealer for assistance. If you cannot reach your dealer, or if they cannot resolve the problem, call Weltem Electric Blow Heater by AmeriCool Technical Support at 888-726-6158 Please have the following information available BEFORE calling the Technical Support Department:
 - a. Your name and address.
 - b. The serial number of the unit.
 - c. Where and when the unit was purchased.
 - d. All of the model information about your Weltem Electric Blow Heater by AmeriCool.
 - e. Any information on the failure, including LED's that may or may not be illuminated.
 - f. A description of the protected equipment, including model numbers if possible.

LIMITED WARRANTY

AmeriCool warrants all AmeriCool products to be free from defects in materials or workmanship, under normal use and service, for a period of 12 months from the date of purchase to the end user (original invoice must be provided). AmeriCool further warrants that the compressor will be free from defects in materials and workmanship for 36 months from the date of purchase to the end user.

AmeriCool's obligation under this warranty is limited to the repair or replacement at its option, of any part or parts, which, upon AmeriCool's examination are shown to be defective, or at AmeriCool's option, the return of the purchase price to the purchaser.

Correction of such defects by repair or replacement, or at AmeriCool's option, the return of the purchase price shall constitute fulfillment of warranty obligations to the purchaser. This warranty does not cover defects or malfunctions which result from causes beyond AmeriCool's control, including, without limitation, (i) unusual physical or electrical stress; (ii) accident, neglect, abuse, misuse or other abnormal use; (iii) failure to perform routine maintenance in accordance with AmeriCool's recommended procedures; (iv) normal wear and tear; (v) repairs or attempted repairs by an unauthorized person; (vi) modifications or alterations to the Products; (vii) use with parts or devices not supplied or approved by AmeriCool (viii) improper installation or service; (ix) shipping damage to any units or spare parts during shipping. This includes and is not limited to compressors, evaporators and condenser coils. This warranty shall extend only to the original end-user and shall be void if any labels or other identifying marks permanently affixed to Products when shipped by AmeriCool are removed, altered, defaced or obliterated.

TO THE EXTENT PERMITTED BY LAW, THIS WARRANTY, AS LIMITED HEREIN, SHALL BE IN LIEU OF AND EXCLUSIVE OF ALL OTHER WARRANTIES, EITHER EXPRESSED OR IMPLIED, ON THE PART OF AMERICOOOL INC., OR WELTEM CO.,LTD. WHETHER ARISING FROM LAW, COURSE OF DEALING, USAGE OF TRADE, OR OTHERWISE, INCLUDING WITHOUT LIMITATION ANY IMPLIED WARRANTY OF MERCHANT-ABILITY OR FITNESS OF A PARTICULAR PURPOSE OR ANY LIABILITY FOR COMMERCIAL LOSSES BASED UPON NEGLIGENCE OR MANUFACTURER'S STRICT LIABILITY. EXCEPT AS EXPRESSLY PROVIDED HEREIN, NEITHER AMERICOOOL, INC., NOR WELTEM CO., LTD. WILL, IN ANY EVENT, BE LIABLE FOR LOST PROFITS, COSTS OF PROCESSING, INJURY, GOODWILL, OR ANY OTHER CONSEQUENTIAL DAMAGES OF ANY KIND ARISING FROM BREACH OF THIS WARRANTY.

Manufactured in Weltem Co., Ltd.,
154, Jayumuyeok 3-gil, Masanhoewon-gu, Changwon-City, Gyeongsangnam-do,
Republic of KOREA 51340 www.weltem.com

Distributed by Americool, Inc. In the USA (Tel.888-726-6158)
WWW.AMERICOOLLLC.COM

Printed in January, 2019